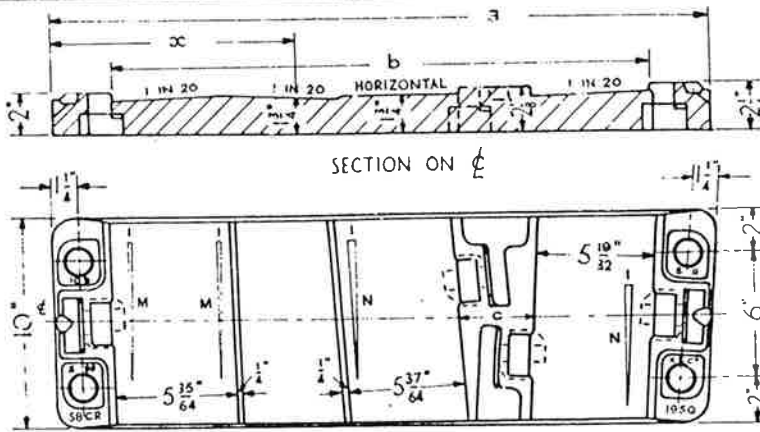


# PERMANENT WAY NOTES

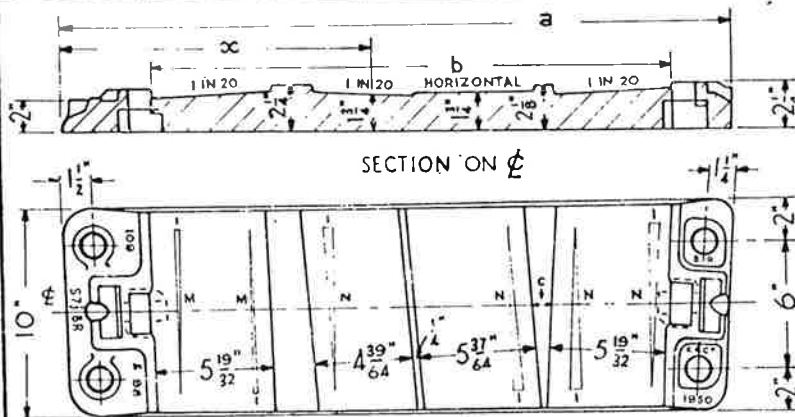
# B.R. 109 FB & B.S. 110A FB BASEPLATES FOR SLIPS (2)

THESE NOTES ARE INTENDED FOR THE GUIDANCE AND ASSISTANCE OF STAFF ENGAGED UPON PERMANENT WAY WORK. THEY DO NOT IN ANY WAY MODIFY, SUPPLEMENT OR AMEND THE INSTRUCTIONS LAID DOWN IN E.D.I., STANDARD DRAWING CIRCULARS ETC., WHICH SHOULD BE REFERRED TO IN ALL CASES.



BASEPLATE	a	b	c	M	N	α
109 & 98 S7CR	2'-7 <sup>3</sup> / <sub>4</sub> "	2'-1 <sup>3</sup> / <sub>4</sub> "	4 <sup>3</sup> / <sub>32</sub> "	82	14	10 <sup>3</sup> / <sub>16</sub> "
" S7 <sup>1</sup> / <sub>2</sub> CR	2'-7 <sup>3</sup> / <sub>4</sub> "	2'-2 <sup>3</sup> / <sub>32</sub> "	4 <sup>7</sup> / <sub>32</sub> "	104	15	11 <sup>7</sup> / <sub>64</sub> "
" S8CR	2'-6 <sup>3</sup> / <sub>4</sub> "	2'-1 <sup>3</sup> / <sub>4</sub> "	3 <sup>7</sup> / <sub>32</sub> "	119	16	11 <sup>7</sup> / <sub>64</sub> "
110A S7CR	2'-7 <sup>3</sup> / <sub>4</sub> "	2'-2 <sup>3</sup> / <sub>32</sub> "	4 <sup>3</sup> / <sub>32</sub> "	95	14	11 <sup>5</sup> / <sub>64</sub> "
" S7 <sup>1</sup> / <sub>2</sub> CR	2'-7 <sup>3</sup> / <sub>4</sub> "	2'-2 <sup>3</sup> / <sub>32</sub> "	4 <sup>7</sup> / <sub>32</sub> "	114	15	11 <sup>5</sup> / <sub>64</sub> "
" S8CR	2'-7"	2'-1 <sup>3</sup> / <sub>32</sub> "	3 <sup>3</sup> / <sub>32</sub> "	127	16	11 <sup>7</sup> / <sub>32</sub> "

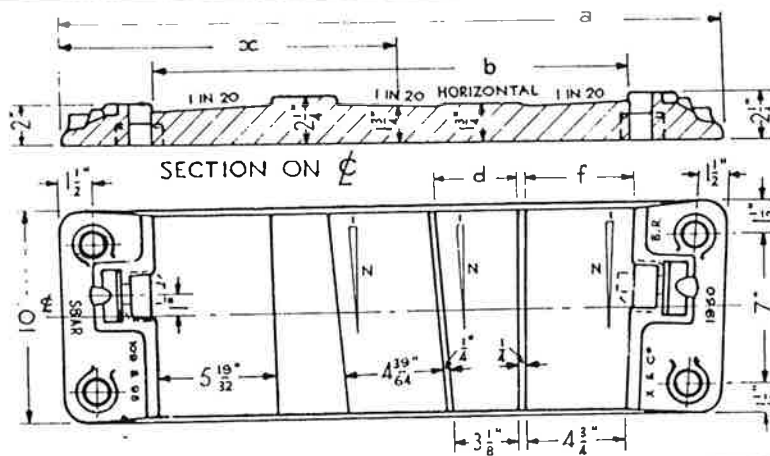
S-CR\*



BASEPLATE	a	b	c	M	N	α
109 & 98 S7BR	2'-6 <sup>3</sup> / <sub>4</sub> "	1'-11 <sup>23</sup> / <sub>32</sub> "	1 <sup>1</sup> / <sub>64</sub> "	127	14	1'-1 <sup>13</sup> / <sub>32</sub> "
" S7 <sup>1</sup> / <sub>2</sub> BR	2'-7 <sup>3</sup> / <sub>4</sub> "	2'-0 <sup>3</sup> / <sub>64</sub> "	2 <sup>7</sup> / <sub>32</sub> "	158	15	1'-2 <sup>3</sup> / <sub>64</sub> "
" S8BR	2'-6 <sup>3</sup> / <sub>4</sub> "	1'-11 <sup>1</sup> / <sub>4</sub> "	1 <sup>7</sup> / <sub>32</sub> "	179	16	1'-2 <sup>3</sup> / <sub>64</sub> "
110A S7BR	2'-5 <sup>3</sup> / <sub>4</sub> "	2'-0 <sup>3</sup> / <sub>64</sub> "	1 <sup>1</sup> / <sub>64</sub> "	147	14	1'-0 <sup>3</sup> / <sub>64</sub> "
" S7 <sup>1</sup> / <sub>2</sub> BR	2'-6 <sup>3</sup> / <sub>4</sub> "	2'-0 <sup>3</sup> / <sub>32</sub> "	2 <sup>3</sup> / <sub>32</sub> "	175	15	1'-1 <sup>3</sup> / <sub>32</sub> "
" S8BR	2'-5 <sup>3</sup> / <sub>4</sub> "	1'-11 <sup>3</sup> / <sub>8</sub> "	7 <sup>3</sup> / <sub>32</sub> "	193	16	1'-0 <sup>3</sup> / <sub>16</sub> "

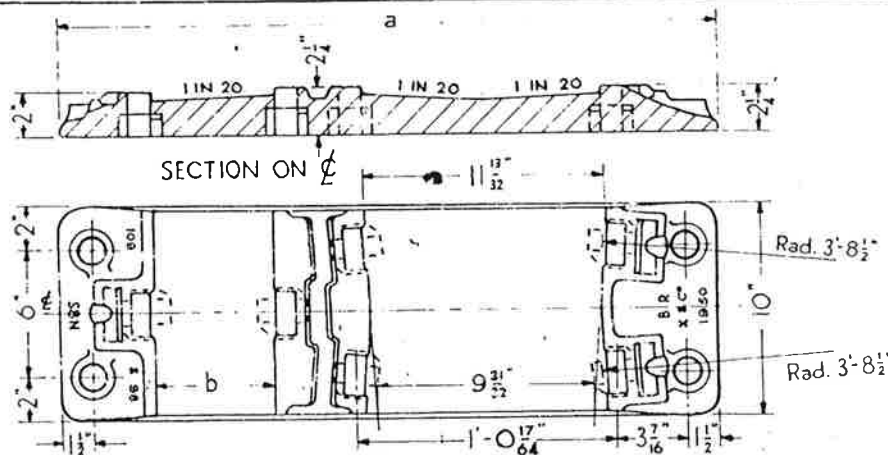
\* no shoulders

S-BR\*



BASEPLATE	a	b	d	f	N	α
109 & 98 S7AR	2'-6 <sup>3</sup> / <sub>4</sub> "	1'-9 <sup>23</sup> / <sub>32</sub> "	4 <sup>3</sup> / <sub>64</sub> "	5 <sup>7</sup> / <sub>64</sub> "	14	1'-3 <sup>3</sup> / <sub>16</sub> "
" S7 <sup>1</sup> / <sub>2</sub> AR	2'-7 <sup>3</sup> / <sub>4</sub> "	1'-10 <sup>3</sup> / <sub>64</sub> "	4 <sup>7</sup> / <sub>64</sub> "	5 <sup>7</sup> / <sub>64</sub> "	15	1'-4 <sup>7</sup> / <sub>64</sub> "
" S8AR	2'-6 <sup>3</sup> / <sub>4</sub> "	1'-10 <sup>3</sup> / <sub>32</sub> "	4 <sup>7</sup> / <sub>64</sub> "	5 <sup>7</sup> / <sub>64</sub> "	16	1'-3 <sup>23</sup> / <sub>32</sub> "
110A S7AR	2'-7 <sup>3</sup> / <sub>4</sub> "	1'-10 <sup>3</sup> / <sub>64</sub> "	4 <sup>3</sup> / <sub>64</sub> "	5 <sup>7</sup> / <sub>64</sub> "	14	1'-3 <sup>5</sup> / <sub>64</sub> "
" S7 <sup>1</sup> / <sub>2</sub> AR	2'-7 <sup>3</sup> / <sub>4</sub> "	1'-10 <sup>3</sup> / <sub>64</sub> "	4 <sup>7</sup> / <sub>64</sub> "	5 <sup>7</sup> / <sub>64</sub> "	15	1'-4 <sup>3</sup> / <sub>64</sub> "
" S8AR	2'-6 <sup>3</sup> / <sub>4</sub> "	1'-10 <sup>3</sup> / <sub>64</sub> "	4 <sup>7</sup> / <sub>64</sub> "	5 <sup>7</sup> / <sub>64</sub> "	16	1'-3 <sup>5</sup> / <sub>64</sub> "

S-AR\*



BASEPLATE	a	b
109 & 98 S7N	2'-6 <sup>3</sup> / <sub>8</sub> "	5 <sup>19</sup> / <sub>32</sub> "
" S7 <sup>1</sup> / <sub>2</sub> N	2'-7 <sup>3</sup> / <sub>4</sub> "	
" S8N	2'-6 <sup>3</sup> / <sub>4</sub> "	5 <sup>8</sup> / <sub>8</sub> "
110A S7N	2'-6 <sup>3</sup> / <sub>4</sub> "	
" S7 <sup>1</sup> / <sub>2</sub> N	2'-7 <sup>3</sup> / <sub>4</sub> "	
" S8N	2'-6 <sup>3</sup> / <sub>8</sub> "	

S-N

RE/PW/78 & 217

D.J.L