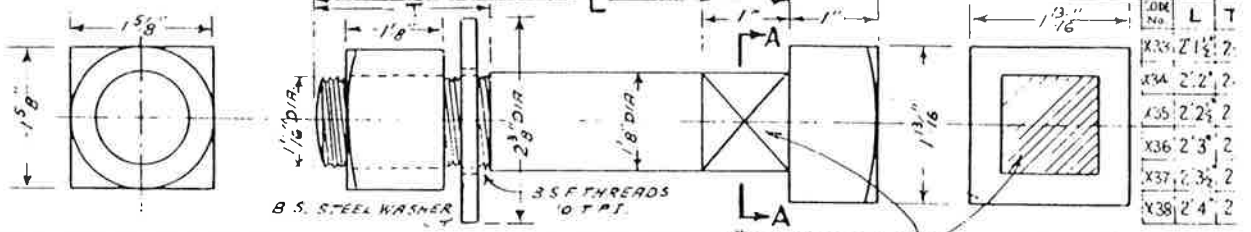


# PERMANENT WAY NOTES

# F B 109LB SWITCHES & CROSSINGS, - BOLTS.

THESE NOTES ARE INTENDED FOR THE GUIDANCE AND ASSISTANCE OF STAFF ENGAGED UPON PERMANENT WAY WORK. THEY DO NOT IN ANY WAY MODIFY, SUPPLEMENT OR AMEND THE INSTRUCTIONS LAID DOWN IN E.D.I., STANDARD DRAWINGS CIRCULARS ETC., WHICH SHOULD BE REFERRED TO IN ALL CASES.

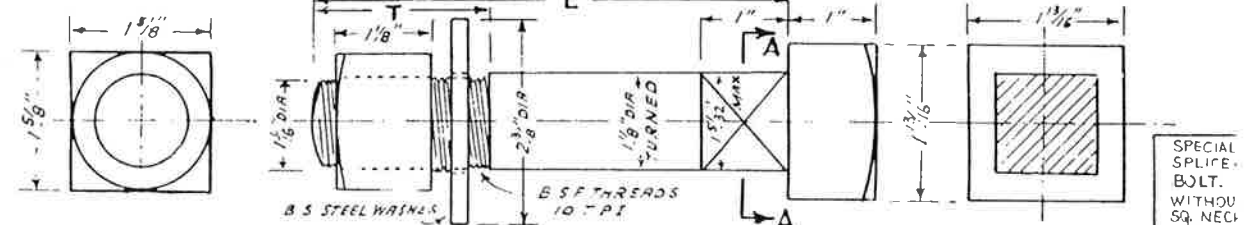


END VIEW OF NUT.

S. & C. BOLT

SECTION 'A-A'

CODE NO.	X1	X2	X3	X4	X5	X6	X7	X8	X9	X10	X11	X12	X13	X14	X15	X16	X17	X18	X19	X20	X21	X22	X23	X24	X25	X26	X27	X28	X29	X30	X31	X32
L	8	8 1/2	10	11	11 1/2	16	13 1/2	11	11 1/2	12	12 1/2	13	13 1/2	14	4 1/2	5	5 1/2	1/6	1/6 1/2	1/7	1/7 1/2	1/8	1/8 1/2	1/9	1/9 1/2	1/10	1/10 1/2	1/11	1/11 1/2	2/0	2/0 1/2	2/1
T	2 1/2	2	2	2	2	2	2	2	2 1/2	2 1/2	2 1/2	2 1/2	2 1/2	2 1/2	2 1/2	2 1/2	2 1/2	2 1/2	2 1/2	2 1/2	2 1/2	2 1/2	2 1/2	2 1/2	2 1/2	2 1/2	2 1/2	2 1/2	2 1/2	2 1/2	2 1/2	2 1/2

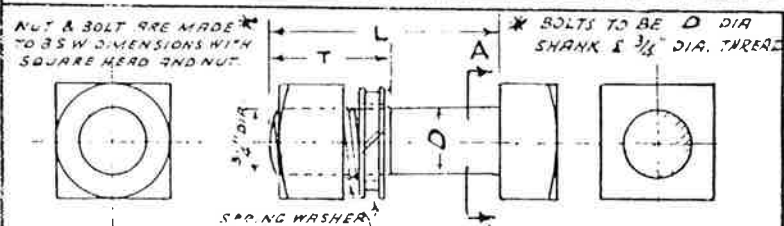


END VIEW OF NUT.

SPLICE BOLT.

SECTION 'A-A'

CODE NO.	CS1	CS3	CS4	CS5	CS6	CS7	CS8	CS9	C60	C61	C62	C63	C64	C65	C66	PC1	PC2	PC3	PC4
L	4 1/2	5 1/2	5 1/2	5 1/2	6	6 1/2	6 1/2	6 1/2	7	7 1/2	7 1/2	7 1/2	8	8 1/2	8 1/2	4 1/2	4 1/2	5	5 1/2
T	2	2	2	2	2	2	2	2	2	2 1/2	2 1/2	2 1/2	2 1/2	2 1/2	2 1/2	2	2	2	2

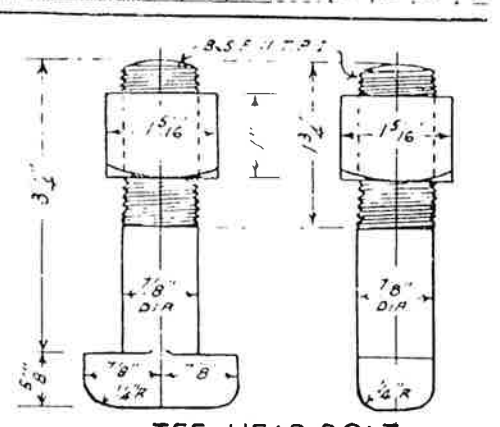


END VIEW OF NUT.

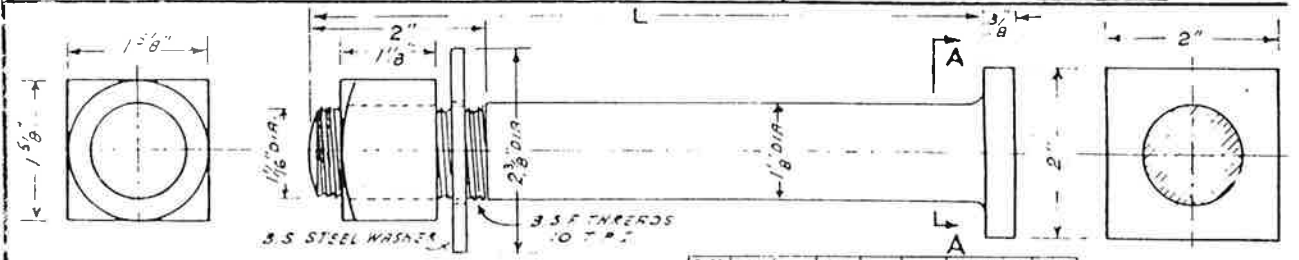
SECTION 'A-A'

STRETCHER-BAR BOLT.

CODE NO.	L	T	D
BB1	2 1/2	1 3/8	3/4
BB2	2 1/2 (TURNED)	1 1/8 (MAX)	13/16
BB3	3	1 1/2	3/4
BB4	3 1/4 (TURNED)	1 1/4 (MAX)	13/16



TEE-HEAD BOLT.  
CODE NO. T.91.

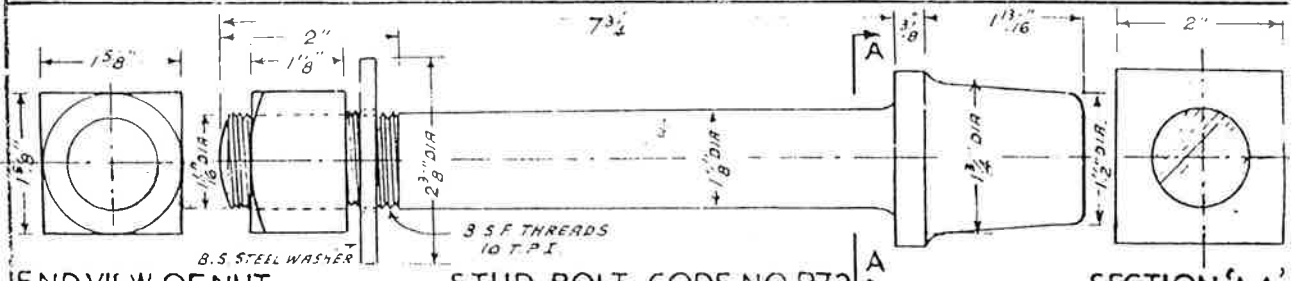


END VIEW OF NUT.

STOCK-RAIL BOLT.

SECTION 'A-A'

CODE NO.	P71	P73	P76	P77	P78
L	7 1/2	1' 0"	1' 1 1/2"	1' 2"	1' 2 1/2"



END VIEW OF NUT.

STUD BOLT. CODE NO. P.72.

SECTION 'A-A'

N.B. WHEN ORDERING, QUOTE TYPE OF BOLT AND CODE NUMBER (Reproduced from Dig REPW/44)