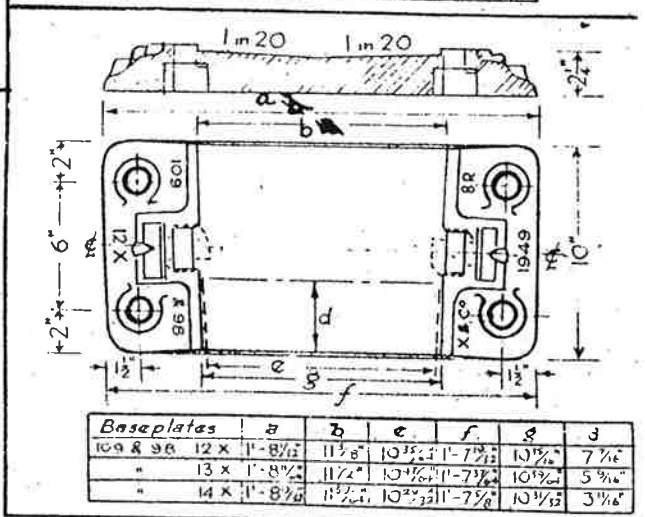
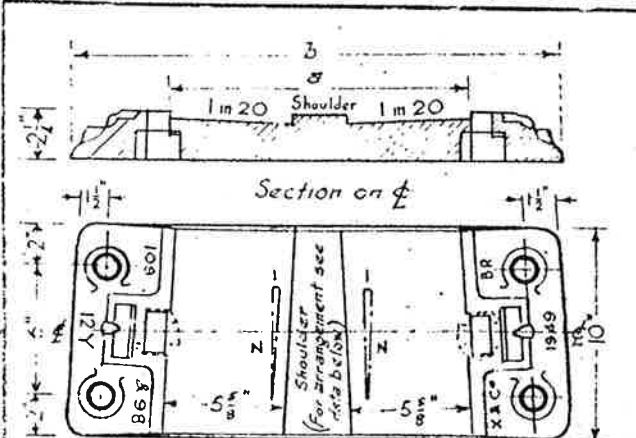
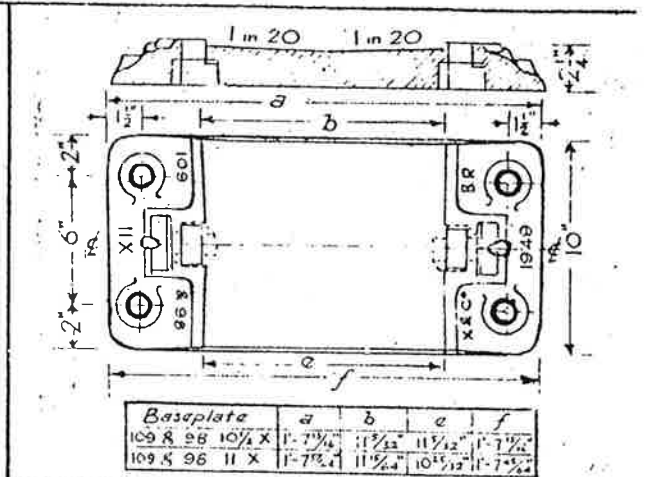
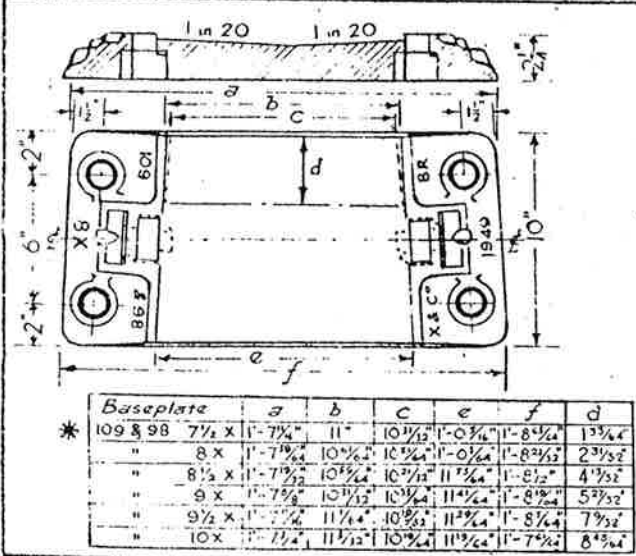


PERMANENT WAY
NOTES

FB1091b. BASEPLATES for
COMMON XING: XYZ Z1 Z2 & Z3.

THESE NOTES ARE INTENDED FOR THE GUIDANCE AND ASSISTANCE OF STAFF ENGAGED UPON PERMANENT WAY WORK. THEY DO NOT IN ANY WAY MODIFY, SUPPLEMENT OR AMEND THE INSTRUCTIONS LAID DOWN IN E.D.I. STANDARD DRAWINGS, CIRCULARS ETC. WHICH SHOULD BE REFERRED TO IN ALL CASES.



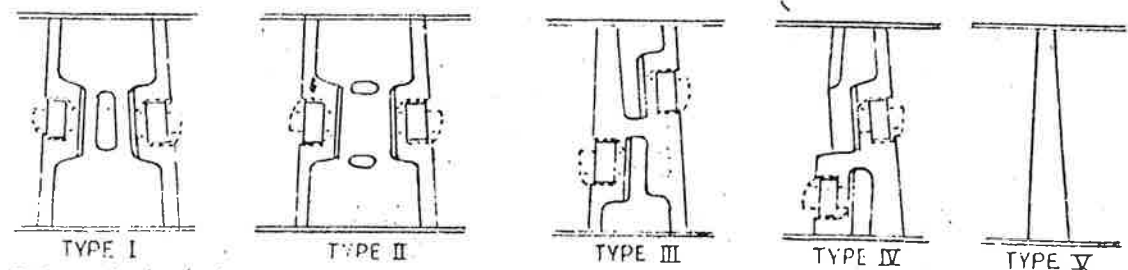
Baseplate	a	b	N	Type
109 & 98 4X	1'-2 1/4"	1'-11 1/2"	8	III
" 4 1/2 X	1'-2 1/4"	1'-10 1/2"	8-5	IV
" 4 3/4 X	1'-1 3/4"	1'-10 1/2"	9	V
" 4 1/2 X	1'-1 1/2"	1'-10 1/2"	9-5	"
" 5 X	1'-1 1/4"	1'-10 1/2"	10	"
" 5 1/2 X	1'-1 1/2"	1'-9 1/2"	10-5	"
" 5 1/4 X	1'-0 3/4"	1'-9 1/2"	11	"
" 5 1/2 X	1'-0 3/4"	1'-9 1/2"	11-5	"
" 6 X	1'-0 3/4"	1'-9 1/2"	12	"
* 6 1/2 X	1'-0 3/4"	1'-8 3/4"	13	No Shoulders
" 7 X	11 3/8"	1'-8 3/4"	14	"
" 16 X	11 1/4"	1'-8 3/4"	32	"
" 18 X	11 3/16"	1'-8 3/4"	36	"
" 20 X	11 3/16"	1'-8 3/4"	40	"

Baseplate	a	b	N	Type
109 & 98 5 1/2 X	1'-5 5/16"	2'-2 1/4"	11-5	I
" 6 Y	1'-5 5/16"	2'-2 1/4"	12	"
" 6 1/2 Y	1'-4 3/4"	2'-1 3/4"	13	"
" 7 Y	1'-4 3/4"	2'-0 3/4"	14	III
* 7 1/2 Y	1'-3 3/4"	2'-0 3/4"	15	"
" 8 Y	1'-3 3/4"	1'-11 1/2"	16	"
" 8 1/2 Y	1'-2 3/4"	1'-11 1/2"	17	"
" 9 Y	1'-2 3/4"	1'-11 1/2"	18	"
" 9 1/2 Y	1'-2 3/4"	1'-10 1/4"	19	"
" 10 Y	1'-1 1/2"	1'-10 1/4"	20	V
" 10 1/2 Y	1'-1 1/2"	1'-10 1/4"	21	"
" 11 Y	1'-1 1/4"	1'-9 1/4"	22	"
" 12 Y	1'-0 3/4"	1'-9 1/4"	24	"
" 13 Y	1'-0 3/4"	1'-9 1/4"	26	"
" 14 Y	1'-0 3/4"	1'-8 3/4"	28	"
" 16 Y	11 3/4"	1'-8 3/4"	32	"
" 18 Y	11 3/16"	1'-7 3/4"	36	No Shoulders
" 20 Y	11 3/16"	1'-7 3/4"	40	"

Baseplate	a	b	N	Type
109 & 98 9 1/2 X	1'-5 1/4"	2'-1 1/4"	19	I
" 10 1/2 X	1'-4 3/4"	2'-1 1/4"	20	"
" 10 3/4 X	1'-4 3/4"	2'-1 1/4"	21	II
" 11 1/2 X	1'-4 3/4"	2'-0 3/4"	22	"
" 12 1/2 X	1'-3 3/4"	2'-0 3/4"	24	"
" 13 1/2 X	1'-2 3/4"	1'-11 1/2"	26	"
" 14 1/2 X	1'-2 3/4"	1'-11 1/2"	28	"
" 16 1/2 X	1'-1 3/4"	1'-10 1/4"	32	V
" 18 1/2 X	1'-0 3/4"	1'-9 1/4"	36	"
" 20 1/2 X	1'-0 3/4"	1'-9 1/4"	40	"
" 15 1/2 X	1'-5 1/4"	2'-1 1/4"	26	I
" 14 1/2 X	1'-4 3/4"	2'-1 1/4"	28	II
" 16 1/2 X	1'-3 3/4"	1'-11 1/2"	32	III
" 18 1/2 X	1'-2 3/4"	1'-11 1/2"	36	"
" 20 1/2 X	1'-1 3/4"	1'-10 1/4"	40	"
" 20 1/2 X	1'-5 1/4"	2'-1 1/4"	32	I
" 18 1/2 X	1'-4 3/4"	2'-1 1/4"	36	III
" 20 1/2 X	1'-3 3/4"	2'-0 3/4"	40	"
" 20 1/2 X	1'-4 3/4"	2'-1 1/4"	40	I

* N.B. FOR ADDITIONAL QUARTER ANGLES SEE P.W. NOTES SHEET R. 4401.

PLAN of INTERNAL ARRANGEMENT at SHOULDERS



R 3029 (P2/P V/29) For general arrangement of these Baseplates on Xings see P.W. Notes Sheets R. 4298.