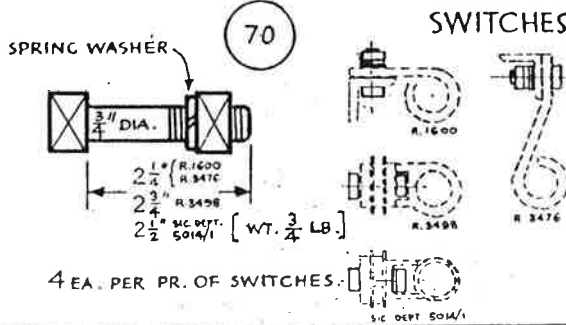


PERMANENT WAY NOTES.

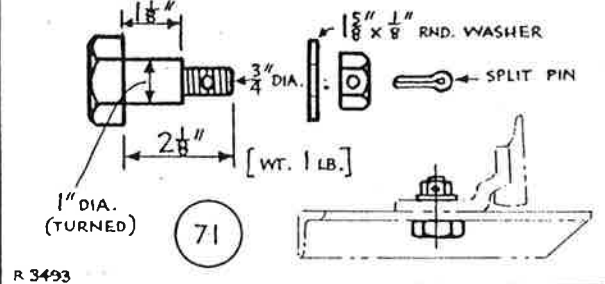
BOLTS, ETC. (3)

THESE NOTES ARE INTENDED FOR THE GUIDANCE AND ASSISTANCE OF STAFF ENGAGED UPON PERMANENT WAY WORK. THEY DO NOT IN ANY WAY MODIFY, SUPPLEMENT OR AMEND THE INSTRUCTIONS LAID DOWN IN E.D.I., STANDARD DRAWING CIRCULARS ETC., WHICH SHOULD BE REFERRED TO IN ALL CASES.

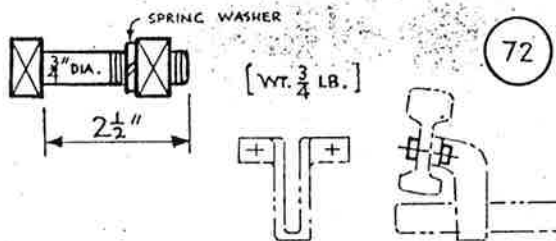
BOLTS FOR "BASKETS" OF POWER-OPERATED SWITCHES



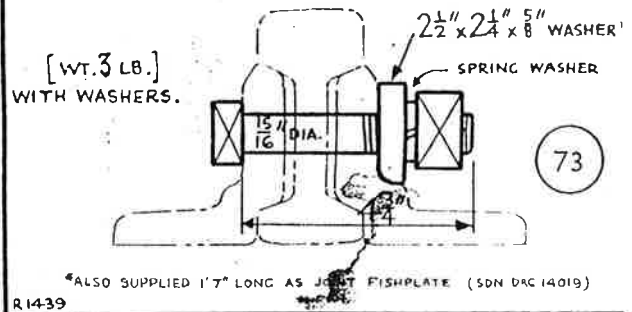
OLD-TYPE TURNED BOLT FOR FRONT STRETCHER-BAR OF POWER-OPERATED SWITCHES.



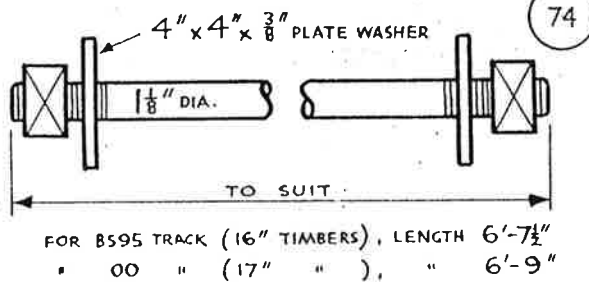
BOLT FOR STRAP OF FLEXIBLE STRETCHER-BAR, FOR SINGLE-TONGUE CATCH-POINT.



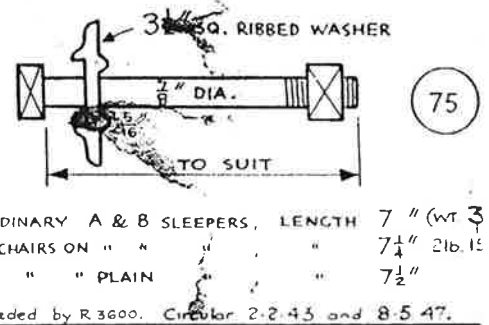
FISHBOLT FOR CONTINUOUS ANGLE-FISHPLATE



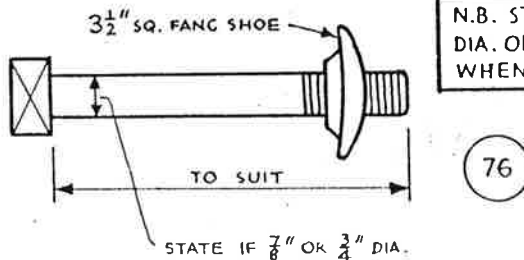
TIE-ROD FOR LONGITUDINAL TIMBER.



CHAIRBOLT

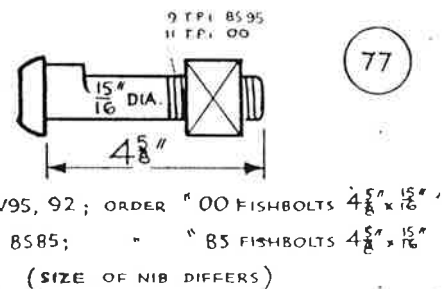


FANGBOLT



N.B. STATE LENGTH & DIA. OF ALL BOLTS ETC. WHEN ORDERING.

FISHBOLT



USUAL LENGTHS :-

- FOR SLAB AND BRACKET (AT XING NOSES ETC.) ... 10"
- FOR SWITCH TOES (S.S. CHAIRS ON TIE-PLATE) ... 8 1/2"
- ORDINARY AND S & C CHAIRS IN XING WORK ... 8"
- FOR C.C. CHAIRS ON PLAIN SLEEPERS ... 7 1/4"
- " ORDY " " A & B ... 7"
- " S.T. " " " " ... 7 1/4"
- VIADUCT GUARD BRACKETS (CROSS SLEEPER) ... 6 5/8" 6 3/4"
- " " " " (7" LONGTCL. TIMBER) ... 8 5/8" 8 1/2"
- " " " " SWITCH LEVER ... 7 1/2"

1/4" ADJUSTING SCREW (OR "TURNBUCKLE" SIGNAL DEPT. FITTING, S11.

